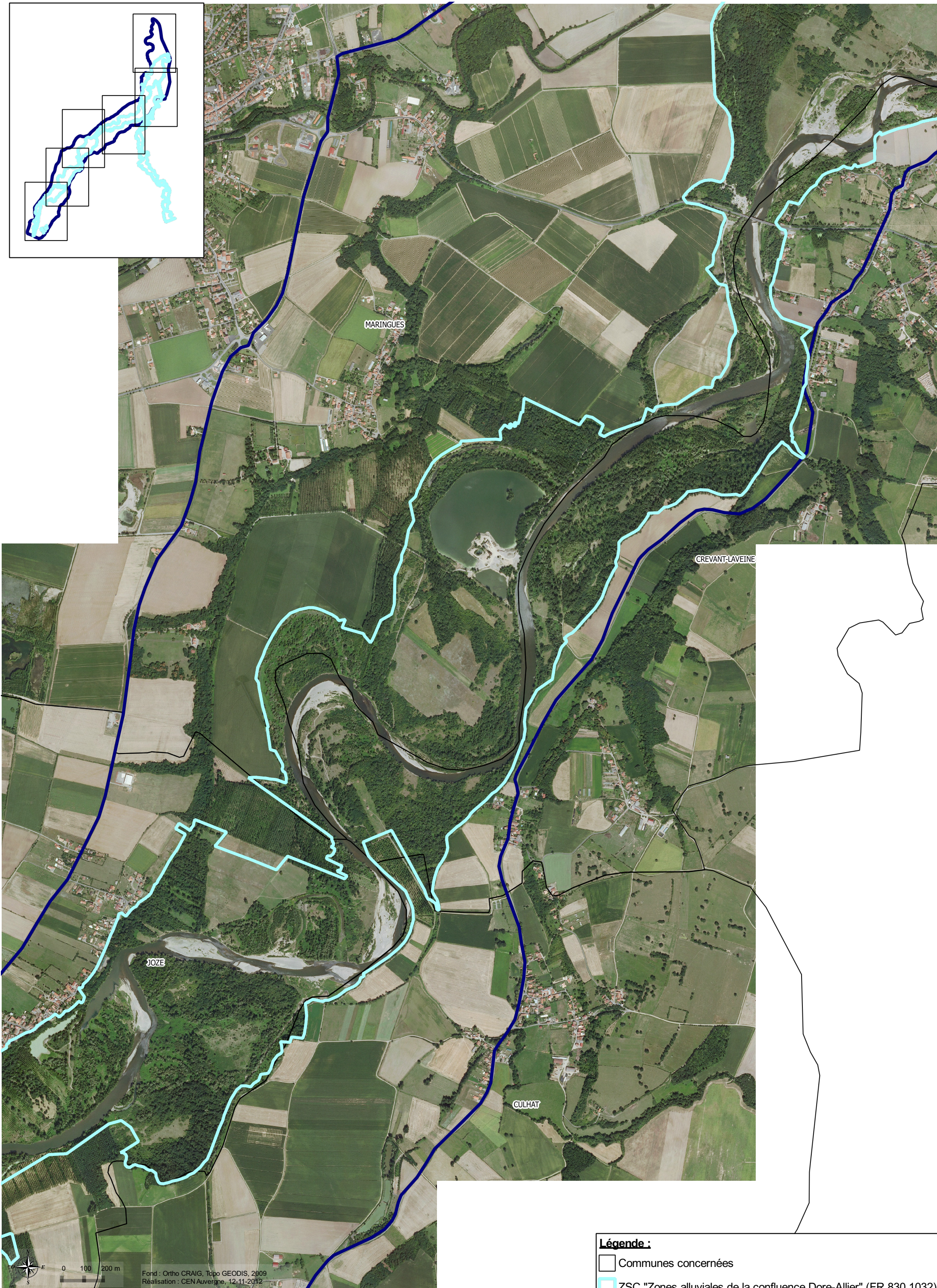
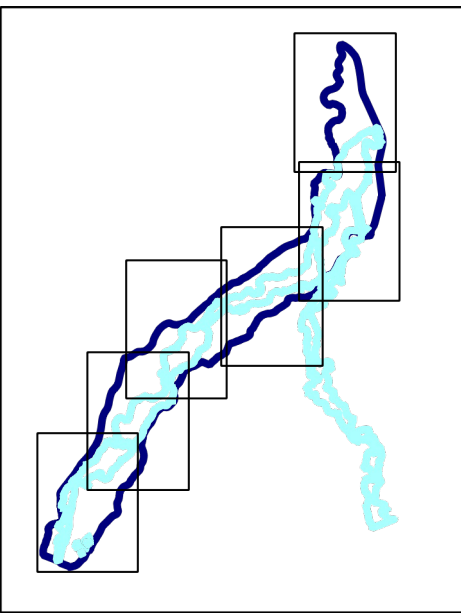





Légende :

- Communes concernées
- ZSC "Zones alluviales de la confluence Dore-Allier" (FR 830 1032)
- ZPS "Val d'Allier St Yorre-Joze" (FR 831 2013)

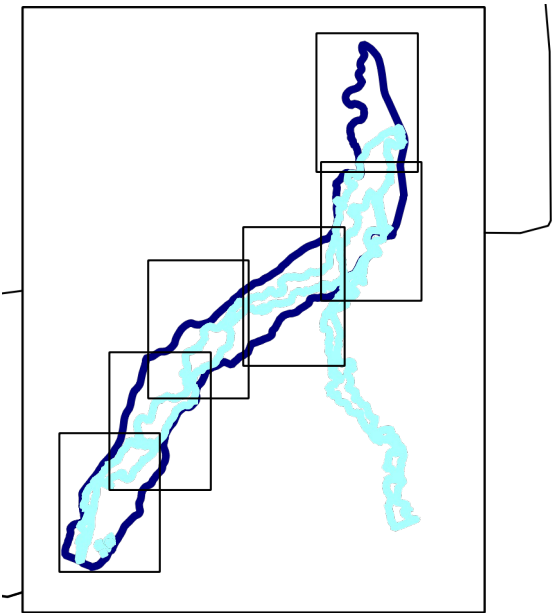


Fond : Ortho CRAIG, Topo GEODIS, 2009
Réalisation : CEN Auvergne, 12-11-2012




Légende :

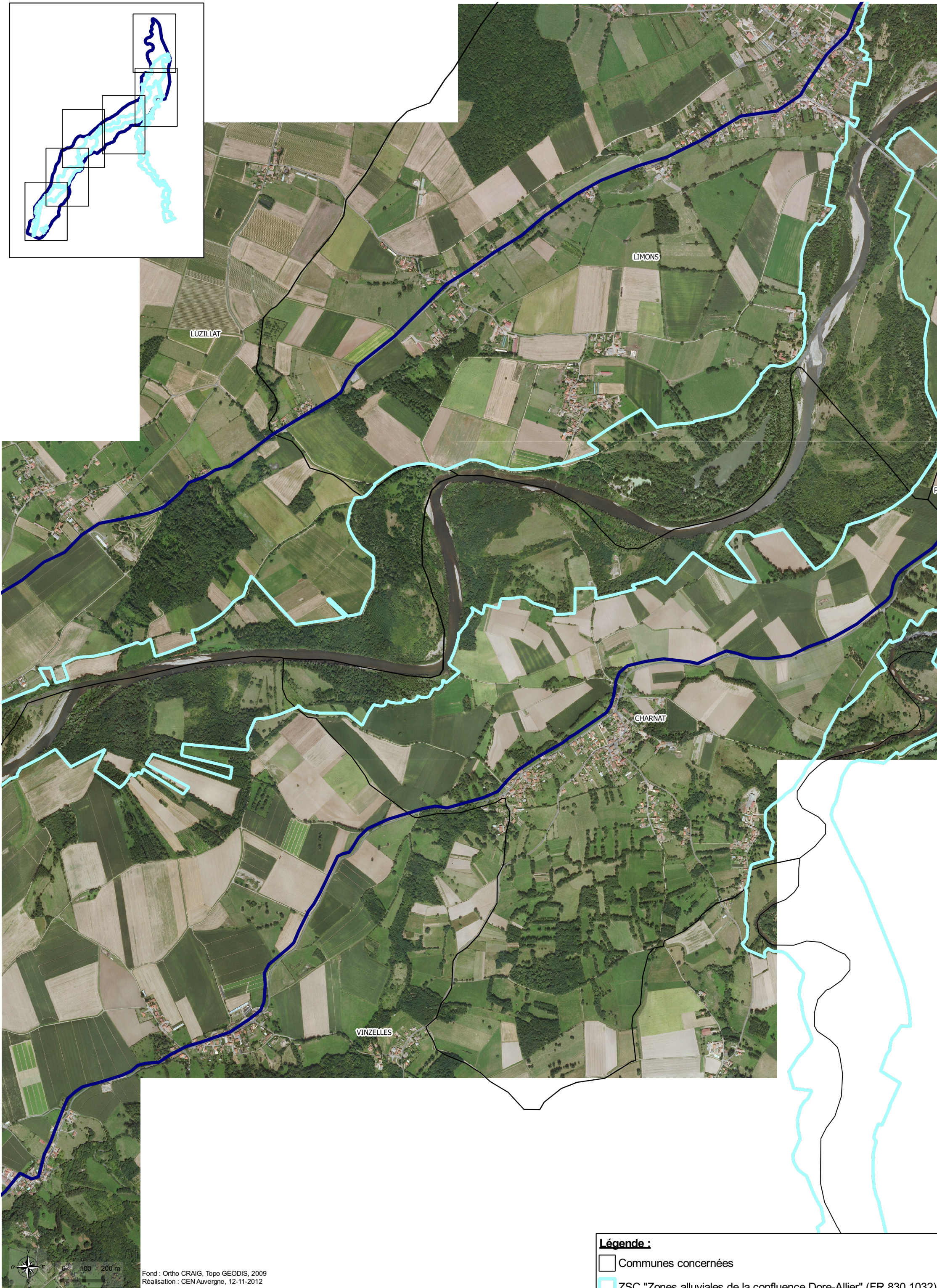
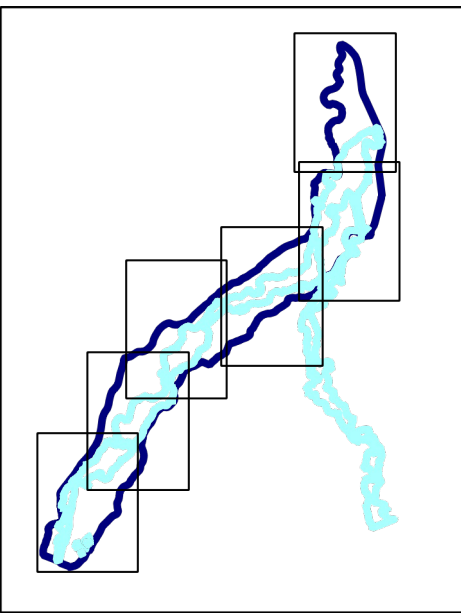
-  Communes concernées
-  ZSC "Zones alluviales de la confluence Dore-Allier" (FR 830 1032)
-  ZPS "Val d'Allier St Yorre-Joze" (FR 831 2013)








Légende :

-  Communes concernées
-  ZSC "Zones alluviales de la confluence Dore-Allier" (FR 830 1032)
-  ZPS "Val d'Allier St Yorre-Joze" (FR 831 2013)

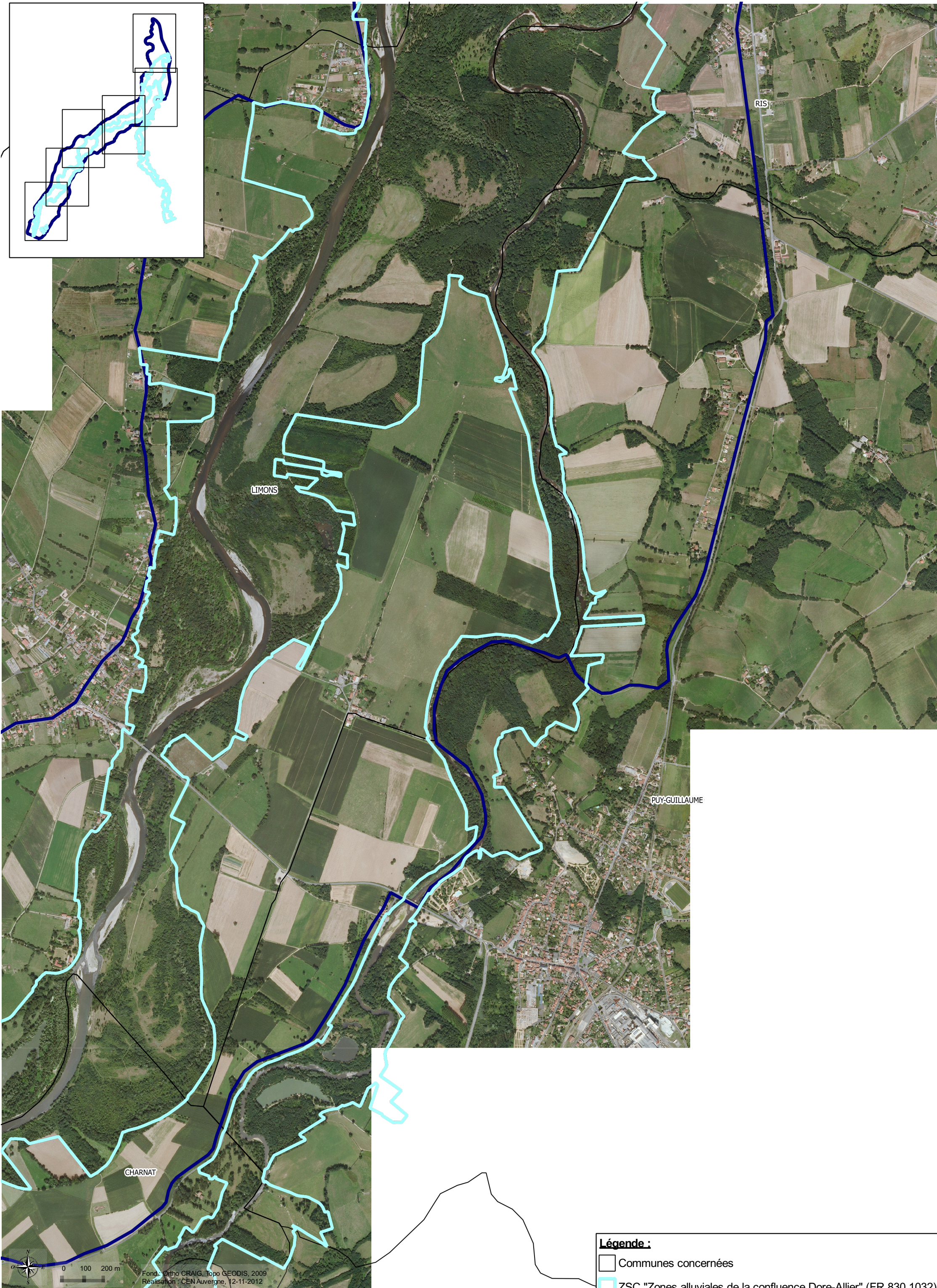


Fond : Ortho CRAIG, Topo GEODIS, 2009
Réalisation : CEN Auvergne, 12-11-2012

Légende :

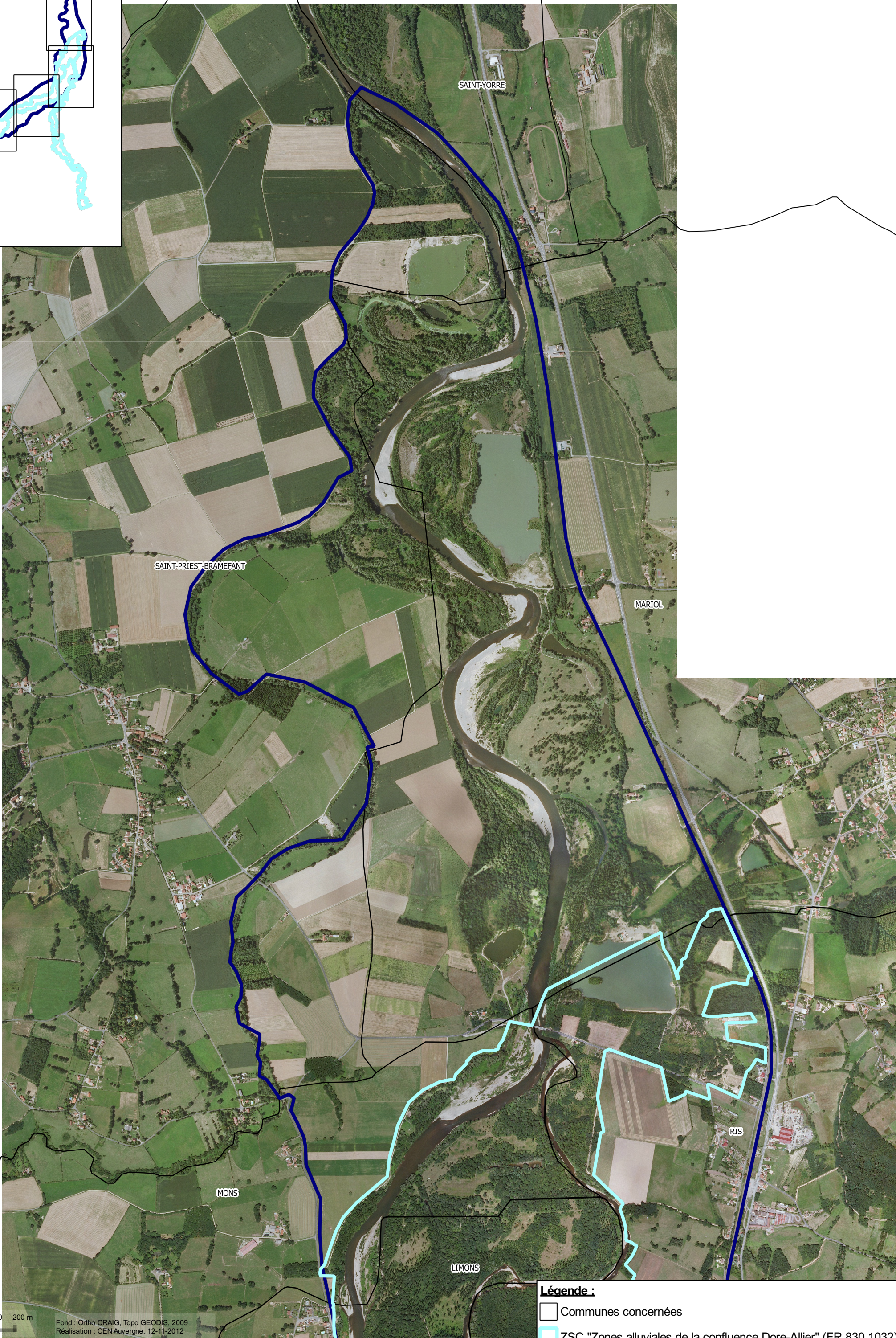
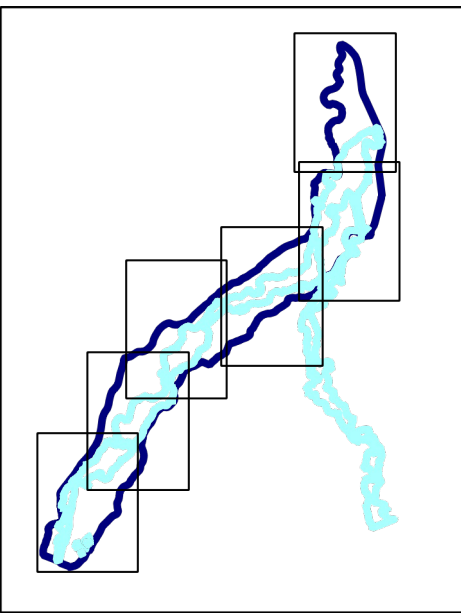
-  Communes concernées
-  ZSC "Zones alluviales de la confluence Dore-Allier" (FR 830 1032)
-  ZPS "Val d'Allier St Yorre-Joze" (FR 831 2013)





Légende :

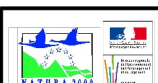
- Communes concernées
- ZSC "Zones alluviales de la confluence Dore-Allier" (FR 830 1032)
- ZPS "Val d'Allier St Yorre-Joze" (FR 831 2013)



Fond : Ortho CRAIG, Topo GEODIS, 2009
Réalisation : CEN Auvergne, 12-11-2012

Légende :

- Communes concernées
- ZSC "Zones alluviales de la confluence Dore-Allier" (FR 830 1032)
- ZPS "Val d'Allier St Yorre-Joze" (FR 831 2013)



Site Internet Val d'Allier 63
Localisation de la ZPS FR 831 2013 sur photo aérienne

